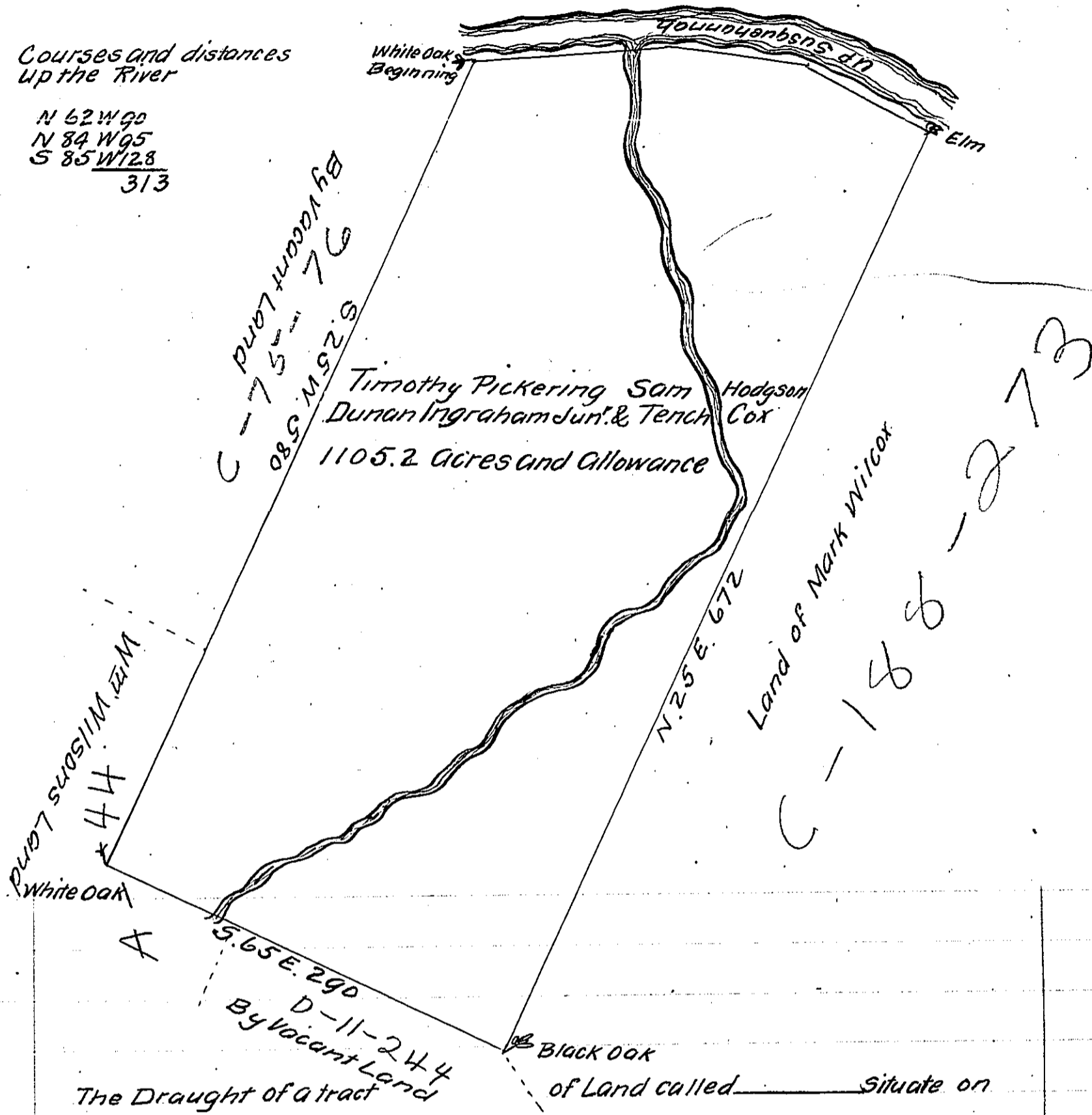


Courses and distances
Up the River

N 62 W 90
N 84 W 95
S 85 W 128
313



The Draught of a tract of Land called _____ Situate on
 the mouth of Sugar Creek on the west side of Susquehanna in District
 N^o 18 in the County of Northumberland containing Eleven hundred
 five acres 45 perches with allowance of six p. cent for Roads.
 Survey'd the 1st day of July Anno Dom 1785 in pursuance of warrant
 N^o 7 dated the 17th of May 1785 to Timothy Pickering Samuel Hodg-
 son Duncan Ingraham Jun^r and Tench Cox

p W^m Maclay
D.S.

To John Lukens Esq S.G.
of Pennsylvania }

IN TESTIMONY that the above is a copy of the original remaining on file in
 the Department of Internal Affairs of Pennsylvania, made
 conformably to an Act of Assembly approved the 16th day of
 February, 1833, I have hereunto set my Hand and caused
 the Seal of said Department to be affixed at Harrisburg,
 this Sixteenth day of November 1911

Nancy Howell
Secretary of Internal Affairs.